

1A Old Haymarket 73-89 Victoria Street, Liverpool, L1 6AF
Tel: 0151 305 2577
Email: liverpoolsales@ascendproperties.com
www.ascendproperties.com

Ascend

Built on higher standards



Stocks Road, Liverpool

£1,300 PCM

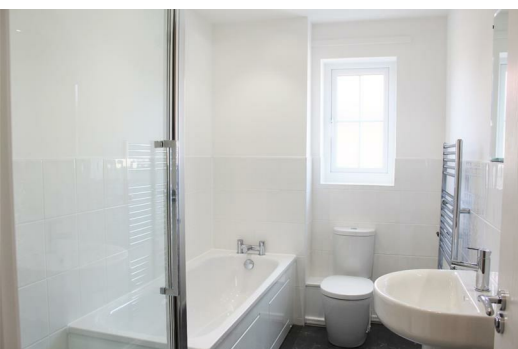
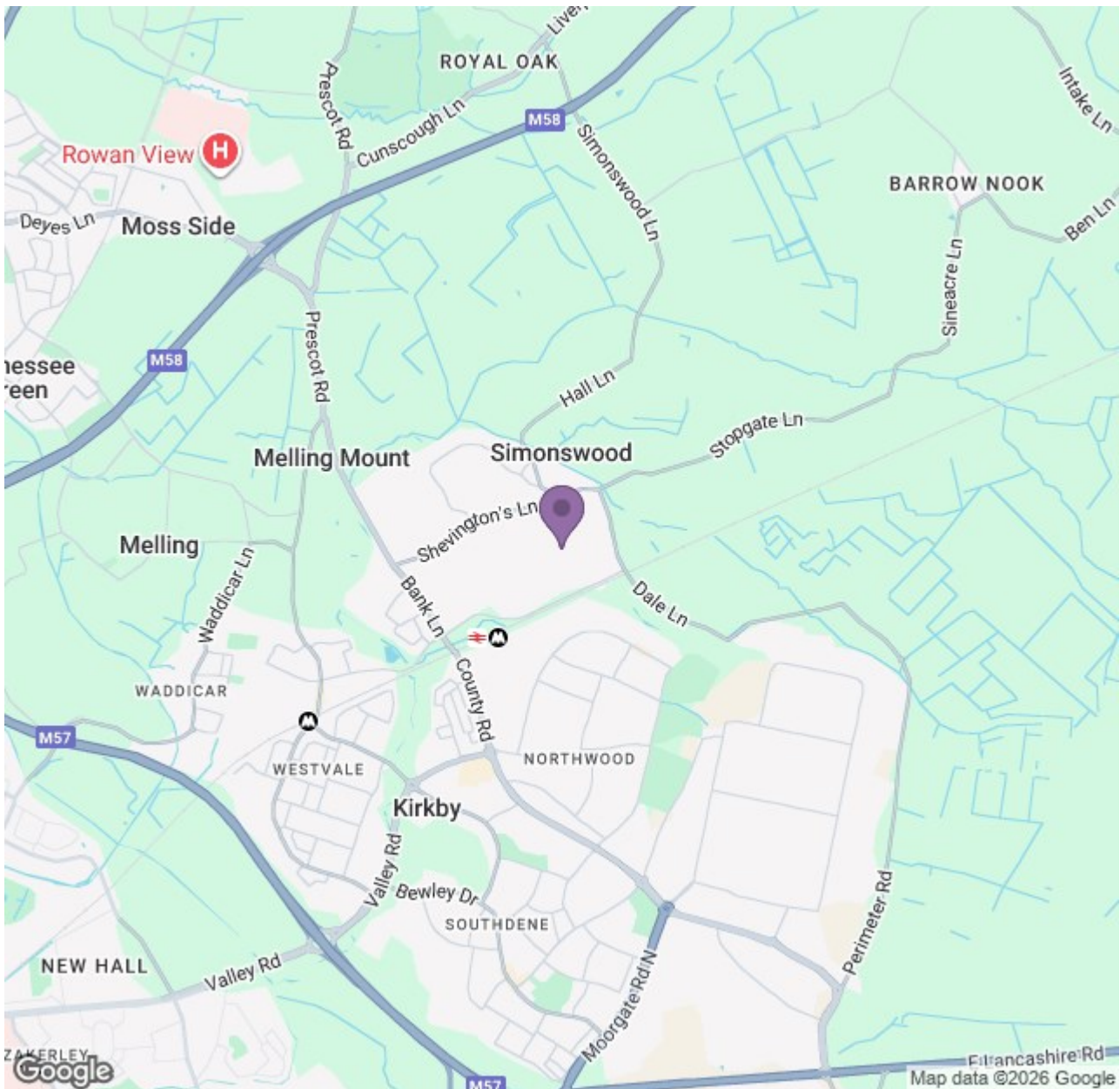
Welcome to Ascend Living at Highfield Green. Located in Kirkby, Highfield Green is an impressive new development of 79 desirable family homes, 8 miles from Liverpool city centre. Highfield Green offers a lovely place for families to grow with an abundance of local schools.

The Lyn combines contemporary living with a traditional family-friendly feel. Walking straight in to the hallway, you will find a large, comfortable living room and a handy WC. Down the hallway is the welcoming open-plan kitchen and dining area, which runs the entire width of the house. French windows lead you out into the private garden, a lovely space for those summer parties and gatherings. There's storage downstairs too.

Upstairs, you'll find the master bedroom with fitted wardrobes, a double bedroom and two single bedrooms. The sizeable bathroom comes with separate bath and shower. Modern and energy-efficient, the Lyn is designed and built to high standards with beautiful flooring throughout and fitted alarm systems for your security and peace of mind.

Available 17 March 2026





Energy Efficiency Rating		Current	Target
Energy Efficiency Rating	88	90	
Energy Efficiency Rating	A	B	
Energy Efficiency Rating	B	C	
Energy Efficiency Rating	C	D	
Energy Efficiency Rating	D	E	
Energy Efficiency Rating	E	F	
Energy Efficiency Rating	F	G	
Energy Efficiency Rating	G		
England & Wales			

Environmental Impact (CO ₂) Rating		Current	Target
Environmental Impact (CO ₂) Rating	80	82	
Environmental Impact (CO ₂) Rating	A	B	
Environmental Impact (CO ₂) Rating	B	C	
Environmental Impact (CO ₂) Rating	C	D	
Environmental Impact (CO ₂) Rating	D	E	
Environmental Impact (CO ₂) Rating	E	F	
Environmental Impact (CO ₂) Rating	F	G	
Environmental Impact (CO ₂) Rating	G		
England & Wales			